

You are here : Home > Resources > Image Gallery

RAMP

RIVER

PEOPLE

RESOURCES

ENVIRONMENTAL MANAGEMENT

Resources of the lower Athabasca

- Oil Sands
- Aggregate Mining
- Forestry
- Fisheries
- Wildlife, Hunting, and Trapping
- Tourism and Recreation

Image Gallery

References

Interactive Features

Monitoring locations map

Impact pathways

[browse all...](#)

Send us Feedback:

send a general website comment

report a specific problem with this page

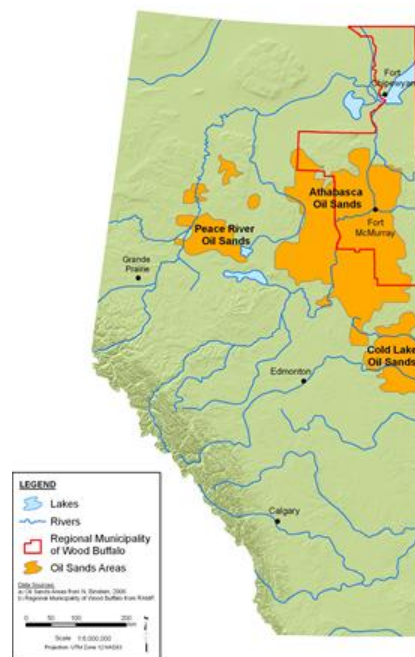
Resources Image Gallery

The images found in this gallery are found throughout the pages on this website related to [resources of the oil sands region](#).

Page 1 of 3 [next »](#)



Source: ©iStockphoto 2008
(click to enlarge)



The oil sands regions of Alberta.

Source: N. Einstein, 2006.
(click to enlarge)



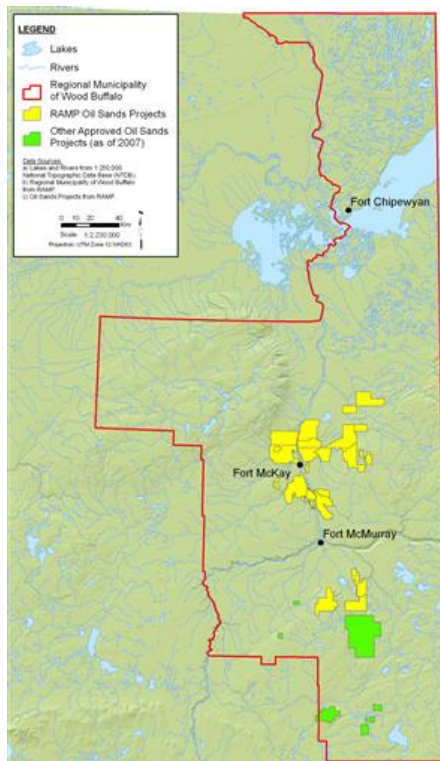
The Syncrude oil sands retired upgrader plant

Source: Copyright © 2005 The Pembina Institute. Photo: David Dodge, The Pembina Institute. www.oilsandswatch.org
(click to enlarge)



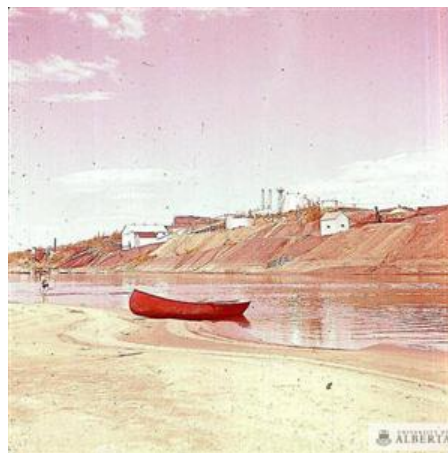
Syncrude oil sands mine.

Source: Copyright © 2005 The Pembina Institute. Photo: David Dodge, The Pembina Institute. www.oilsandswatch.org
(click to enlarge)



Oil sands projects in the RMWB

Source: Hatfield Consultants
(click to enlarge)

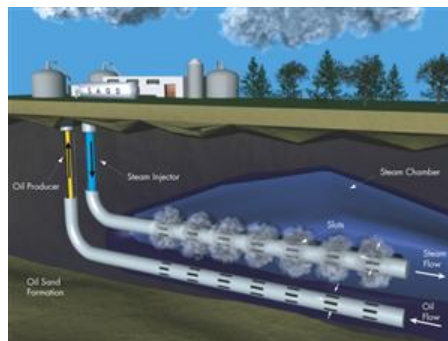


The Bitumount plant, 1949

Source: University of Alberta Archives (image 91-137-041).
(click to enlarge)



Source: Suncor Energy Inc.
(click to enlarge)



Schematic of a SAGD in situ development.
Source: Copyright © 2005 The Pembina Institute.

(click to enlarge)



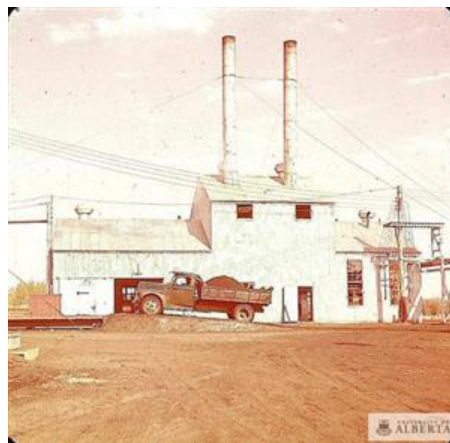
Seismic lines are cut across leases to map deep oil sands deposits.
 Source: David Dodge. Copyright © 2005 The Pembina Institute.
www.oilsandswatch.org
 (click to enlarge)



Suncor upgrader plant and related facilities.
 Source: Chris Evans. Copyright © 2005 The Pembina Institute.
www.oilsandswatch.org
 (click to enlarge)



Fort McMurray, 1942.
 Source: University of Alberta Archives (image 85-22-008)
 (click to enlarge)



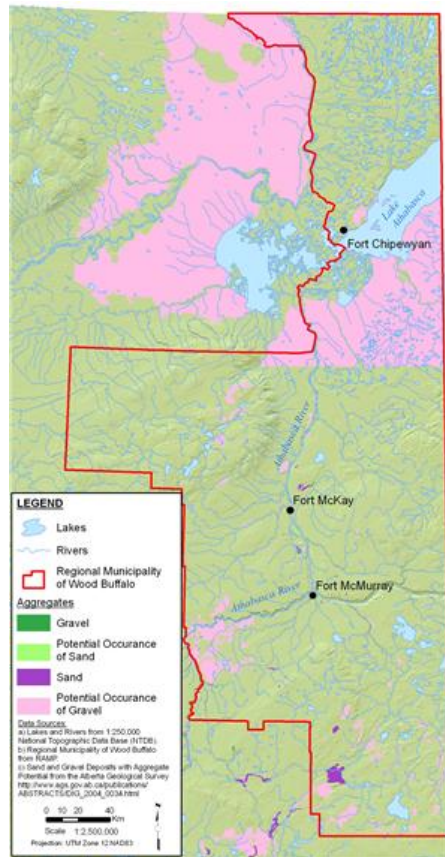
The Bitumount Plant separation unit, 1949.
 Source: University of Alberta Archives (image 91-137-031).
 (click to enlarge)



Tailing Pond north of Syncrude Upgrader
 Source: David Dodge. Copyright © 2005 The Pembina Institute.
www.oilsandswatch.org
 (click to enlarge)



Road building is one of the main uses of aggregates.
 Source: Hatfield Consultants.
 (click to enlarge)



Aggregate distribution in Alberta

Source: Hatfield Consultants, adapted from: AGS, NTDB and RAMP
(click to enlarge)



Alluvial deposits on the Athabasca Floodplain

Source: Jane Elser
(click to enlarge)



Using aggregates in infrastructure development

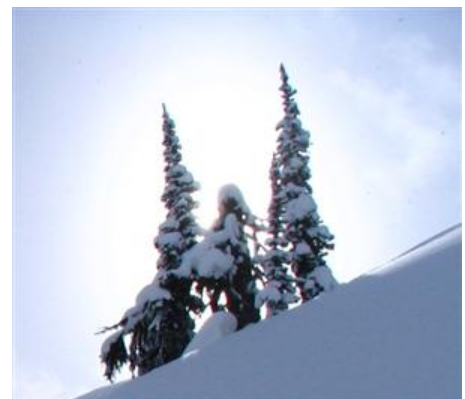
Source: Hatfield Consultants
(click to enlarge)



Source: Hatfield Consultants 2008
(click to enlarge)



Source: ©iStockphoto 2008
(click to enlarge)



Source: Stuart Masterman
(click to enlarge)

Not logged on: [log on here](#)